

# **Village of Chaumont Dissolution Study**

Municipal Employees, Department of Public Works, Highway,  
Water, Sewer, and Lighting  
August 1, 2019



Visit the website: <https://www.danc.org/chaumont-study>

# **Municipal Employees**

# Village Chaumont Employees Personal Services Expenditures: Salary & Benefits

Village Personal Services Expenditures FYE 5/31/18			
Expenditure	Salary		
General Fund	Legislative Board	\$6,200	
	Mayor	\$5,500	
	Treasurer	\$15,967	
	Buildings	\$1,199	
	Central Garage	\$3,692	
	Maintenance of Streets	\$28,674	
	Brush and Weeds	\$6,797	
	Snow Removal	\$11,106	
	Parks	\$14,697	
	Playground and Rec Centers	\$9,892	
	Zoning	\$4,170	
	Refuse and Garbage	\$29,166	
	Water Fund	Water Administration	\$15,852
		Water Transmission and Distribution	\$18,394
Sewer Fund	Sewer Administration	\$15,828	
	Sanitary Sewers	\$27,997	
	Storm Sewers	\$81	
	Total Employee Salaries	\$215,212	
	Total Benefits Paid	\$101,154	
	Benefits as % of Salary	47%	
	<b>Total Compensation</b>	<b>\$316,366</b>	

# Lyme All Funds Employee Personal Services Salary & Benefits

Town Personal Services Expenditures FYE 12/31/2018		
Expenditure	Salary	
General Fund Town Wide	Legislative Board	\$21,181
	Municipal Court	\$26,626
	Supervisor	\$33,097
	Tax Collection	\$5,963
	Assessor	\$44,855
	Clerk	\$36,174
	Personnel	\$18,994
	Buildings	\$1,917
	Street Admin	\$58,590
	Playgr & Rec Centers	\$4,470
	Refuse & Garbage	\$42,296
	Water Administration	\$4,292
	Cemetery	\$1,200
	Zoning	\$21,640
General Fund Part Town	Planning	\$5,468
	Hwy – Machinery	\$96,297
Hwy Town-wide Fund	Hwy – Brush and Weeds	\$1,652
	Hwy Operators - Snow Removal	\$112,225
	Hwy Operators - Services Other Government	\$14,140
Hwy Part-town Fund	Hwy Operators - Maintenance of Streets	\$72,607
Miscellaneous Fund (Health Officer)	Town Health Officer Physician	\$2,000
Water Fund	Water Administration	\$19,164
	Total Salary	\$644,848
	Total Benefits Paid	\$228,934
	Benefits as Percent of Salary	36%
	<b>Total Compensation</b>	<b>\$873,782</b>

# Village Chaumont Employees Personal Services Expenditures FYE18

Position		Expenditure Reported in FYE18 AUD	# of staff and budgeted salaries
Legislative Board (Elected)		\$6,200	4 Trustees (in FYE18 there were only 3) \$2,000 per Trustee \$2,100 for Deputy Mayor
Mayor (Elected)		\$5,500	1 Mayor
Clerk/Treasurer (Full time) Part-time Clerk	Treasurer	\$15,967	1 Clerk/Treasurer: \$44,000 1 Part-time Clerk: \$13.22/hr
	Water Admin	\$15,852	
	Sewer Admin	\$15,828	
Zoning (Code Enforcement)		\$4,170	1 Code Enforcement Officer
Playground and Rec Center - Seasonal Beach Staff		\$9,892	1 Beach Director 3 Lifeguards
DPW Staff are all full time and have DPW Duties and Water/Sewer Duties. DPW staff track their time for DPW, Water, and Sewer tasks on timesheets, so costs in the AUD are actual costs for these services.  \$95,331 on DPW tasks \$18,394 on Water tasks \$28,078 on Sewer/Storm tasks	Buildings	\$1,199	1 Superintendent: \$58,000 1 Operator: \$45,000 + overtime 1 Operator/Laborer: \$14.90/hr + overtime
	Central Garage	\$3,692	
	Maintenance of Streets	\$28,674	
	Brush and Weeds	\$6,797	
	Snow Removal	\$11,106	
	Parks	\$14,697	
	Refuse and Garbage	\$29,166	
	Water Trans and Dist	\$18,394	
	Sanitary Sewers	\$27,997	
	Storm Sewers	\$81	

# Village Chaumont Employee Benefits

Staff that are eligible for benefits: 4 full-time (FT) and 10 part-time (PT)

Benefit	Full-time Employees	Part-time Employees	FYE18 Expenditure
State Retirement System	Village Clerk DPW Superintendent DPW Operator DPW Laborer	1 Part time Clerk	\$39,549
Social Security	Village Clerk DPW Superintendent DPW Operator DPW Laborer	3 Trustees 1 Part time Clerk 1 Mayor 1 Code Enforcement 4 Seasonal Beach Staff	\$15,153
Workers Compensation Insurance	Village Clerk DPW Superintendent DPW Operator DPW Laborer	None	\$2,983
Disability Insurance	Village Clerk DPW Superintendent DPW Operator DPW Laborer	1 Part time Clerk	\$153
Medical/Dental Insurance	Village Clerk DPW Superintendent DPW Operator DPW Laborer	None	\$43,316

# Village Chaumont Employees Benefits

The Village Board has a Personnel Policy that outlines holiday, vacation, sick leave, and other benefits.

<b>Full-time Village Employees:</b>	
<b>Paid Holidays</b>	12 paid holidays
<b>Paid Vacation</b>	6 months-1 year: 8 days 2-10 years: 13 days 10-20 years: 18 days Over 20 years: 23 days Maximum accrual of 4 weeks
<b>Sick Leave</b>	8 hours/month Maximum accrual of 180 days
<b>Personal Leave</b>	2 days/year No carryover year to year
<b>Bereavement Leave</b>	3 days for immediate family; 1 day for other relatives
<b>Medical/Dental Insurance</b>	Full time employees and their families are eligible
<b>Other Benefits</b>	Mileage, travel reimbursements, clothing allowances, cell phone allowances, and other items depending on position

# Town of Lyme General Fund Employee Personal Services Salary

Position	Salary as reported in FYE 18 AUD	# of staff and budgeted salaries
Legislative Board (Elected)	\$21,181	Deputy Supervisor: \$516.75 month 3 Council Members: \$427.86 month
Municipal Court	\$26,626	2 Justices 1 Court Clerk
Supervisor (Elected) (this line item also includes the Clerk to Supervisor position)	\$33,097	1 Supervisor: \$14,000 1 Clerk to Supervisor: \$19,094
Tax Collection	\$5,963	1 Tax Collector (position is eliminated in 2020 and duty given to Town Clerk)
Assessment	\$44,855	3 Assessors 5 Board of Assessment Review 1 Board of Assessment Review Secretary
Town Clerk (Elected)	\$34,480	1 Clerk: \$35,298
Personnel (includes Deputy Clerk and 2 <sup>nd</sup> Deputy Clerk)	\$18,994	1 Deputy Clerk: \$16,994 2 <sup>nd</sup> Deputy Clerk: \$13.22/hr
Buildings	\$1,917	1 Cleaning Staff
Street Admin	\$58,590	Highway Superintendent: \$58,350 Highway Deputy: \$2,179 + MEO salary
Playground and Rec Centers	\$4,470	1 Recreation Director Summer Recreation Staff
Refuse and Garbage	\$42,296	6 Transfer Site staff
Water Administration	\$4,292	5 Water Board Members
Cemetery	\$1,200	Three Mile Bay Cemetery Manager
Zoning	\$21,640	1 Zoning Officer 1 Deputy Zoning Officer 5 Zoning Board Members 1 Zoning Board Secretary
Planning	\$5,468	5 Planning Board Members 1 Planning Board Secretary



## Town of Lyme Highway Employee Personal Services Salary

Highway Funds Employee Cost FYE 12/31/2018		
Position	Salary as reported in FYE 18 AUD	# of staff and budgeted salaries
Machinery	\$96,297	6 FT staff: 5 MEO*: \$20.15/hour 1 Highway Deputy: \$20.15/hour  2 Winter Seasonal staff: 1 MEO plows State Highways 1 On-call only MEO  * MEO = Motor Equipment Operator
Brush and Weeds	\$1,652	
Snow Removal	\$112,225	
Services Other Governments	\$14,140	
Maintenance of Streets	\$72,607	

## Town of Lyme Water and Misc. Fund Employee Personal Services Salary

Water Fund and Misc. Fund Employee Cost FYE 12/31/2018		
Position	Salary as reported in FYE 18 AUD	# of staff individual salaries
Water	\$19,164	Water Operator/Hwy MEO
Misc Fund (Public Health Officer)	\$2,000	2 staff 1 Medical Officer: \$1,000 1 Doctor: \$1,000

# Town Lyme Employee Benefits

Staff that are eligible for benefits: 8 FT and 51 PT\*

Benefit	Full-time Employees	Part-time Employees		FYE 18 Expenditure
State Retirement System	Town Clerk Hwy Superintendent 6 Hwy Staff	None		\$50,596
Social Security	Town Clerk Hwy Superintendent 6 Hwy Staff	All Part-time Employees		\$50,104
Disability Insurance	Town Clerk Hwy Superintendent 6 Hwy Staff	All Part-time Employees		\$868
Medical Insurance	Town Clerk (eligible, current does not participate) Hwy Superintendent 6 Hwy Staff	No Part-time	2 Retirees	\$125,128
Other Negotiated Benefits	Town Clerk Hwy Superintendent 6 Hwy Staff	None		\$2,238

Note: the Town's Workers Compensation Insurance is covered by the County and paid by the Town through a County chargeback.

# Town Lyme Employees - Benefits

The Town Teamsters Contract outlines employee benefits for full-time employees in the Highway Department.

<b>Full-time Town Employees (Highway)</b>	
<b>Paid Holidays</b>	11 holidays
<b>Paid Vacation</b>	1 year: 1 week 3 years: 2 weeks 5 years: 3 weeks 12 years: 4 weeks 20 years: 5 weeks (hired prior to 12/31/17 only)
<b>Sick Leave</b>	Earn 1 ¼ days/month Maximum accrual of 200 days (hired prior to 12/31/17) Maximum accrual of 125 days (hired after 12/31/17)
<b>Medical Insurance</b>	Full-time employees are eligible for medical insurance. The Town Clerk may participate in the Teamsters Medical Insurance if they choose. Existing employees hired prior to 1/1/2014 are eligible for medical insurance after retirement.

# **Village Department of Public Works**

# Chaumont Department of Public Works (DPW)

## Three full time staff

- Superintendent of Public Works
- 2 DPW Operator/Laborers

## The DPW provides the following services to Village residents:

- Snow Plowing and Removal
- Grass mowing, weed-whacking, and brush removal
- Street maintenance
- Recycling pick-up for residents, businesses, and school
- Park and Beach maintenance
- Maintenance of Village buildings, equipment, and other assets
- Morning and afternoon school crossing guard
- Other tasks as requested by Village Board

# DPW - Snow Plowing and Removal

**The DPW plows and salts all the Village streets: 2.6 centerline miles (4.86 lane miles)**

- The Village DPW removes snow from the sewer pump stations, wastewater treatment plant, and other Village-owned buildings.
- DPW clears snow from all crosswalks in the Village and the small bridge by the hardware store on Main St.
- DPW clears snow from sidewalks on Church St. from Route 12E to the school for the safety of children walking to school. Note: residents are required to clear snow from sidewalks fronting their property.

# DPW - Grass Mowing, Weed-Whacking, & Brush Removal

The DPW mow and weed-whack during the summer months in the following areas:

- Village-owned property
  - Memorial Park
  - Beach Park
  - Ball Field once a week
  - Municipal office
  - Fire Hall
  - Wastewater Treatment Plant
  - Tennis Court
  - 3 grassy banks near bridge
  - 7 sewer pump stations
  - Sewer line right-of-way from WWTP to Water St
  - Brush-hogging Park Dr. twice a year
  
- Residential brush pick-up last Thursday of the month April-October

# DPW - Street Maintenance

## Street Paving

- There are 2.6 centerline miles of Village streets
- The Village contracts the paving out to a contractor. The Town of Lyme hauls blacktop in their trucks
- The Village uses CHIPS funds to pay for paving materials and services
- There is no formal agreement between the Village and Town for this paving assistance

## Drainage Improvement

- Maintaining street edges; cleaning around and inside 20 street catch basins

## Street cleaning - removing winter sand and debris

## Cold patching pavement

## Dead tree removal

## Trimming and removal of leaves, branches, and green waste from street sides

## Street sign maintenance and replacement as needed



# DPW - Recycling

## The DPW provides year-round recycling pick-up services in the Village:

- Tuesdays: businesses and school recycling pick-up
  - 3 hours, 3-person crew
- Wednesdays: residential recycling pick-up
  - 5 hours, 3-person crew
- Once a year, the DPW will do a week of Spring Clean-up services and will haul away anything residents leave on the curb (not including brush, tires, batteries, car/boat parts, loose glass, doors, or windows)
- The Village provides garbage pick-up as a contracted service that is awarded to a contracted hauler. DPW does not perform garbage pick-up service, except for the Spring Clean-up service mentioned above.

# DPW - Park Maintenance

## Memorial Park, Beach, and Ball Field

### General Maintenance Includes:

- Cleaning and maintaining park structures
- Repairing benches
- Mowing and weed-whacking
- Snow removal
  
- **Beach**
  - Open seasonally
  - In May, before the beach opens, the DPW staff need to restructure the beach area. This includes adding sand, clearing more area for the beach, and cleaning up winter debris.
  - DPW staff spend approximately one hour every morning the beach is open to rake, clear seaweed, clean goose droppings, and remove garbage.
  
- **Ball Field**
  - DPW typically mows the Town Ball Field once a week (depending on weather and grass growth)

# DPW - Other Services

## Other services/duties of the DPW:

- Maintenance of Village equipment, vehicles, buildings, and assets
- Other tasks as directed by Village Board
- DPW staff are providing school crossing guard services for approximately 40 minutes in the morning and 40 minutes in the afternoon at the intersection of Route 12 E and Church St. This service is not outlined in the shared service agreement between the Village and school.

# DPW Major Assets

The Village DPW maintains the following large equipment:

Asset	Model Year	Insurance Coverage Amount
Ford Explorer *Village gave this truck back to the Town in June 2019*	2002	\$500
HMMD Trailer	2002	\$500
Ford Pickup	2008	\$500
Ford Pickup	2015	\$500
Ford Dump Truck	2019	New this year – no amount listed
John Deere Tractor with bucket & backhoe	1990	\$24,546
Sander	Not listed	\$3,500
John Deere Mower	2014	\$7,783
Massey-Ferguson Mower	2009	\$2,000
Backhoe/Loader	2016	\$83,648
Push Blade	2016	\$3,700

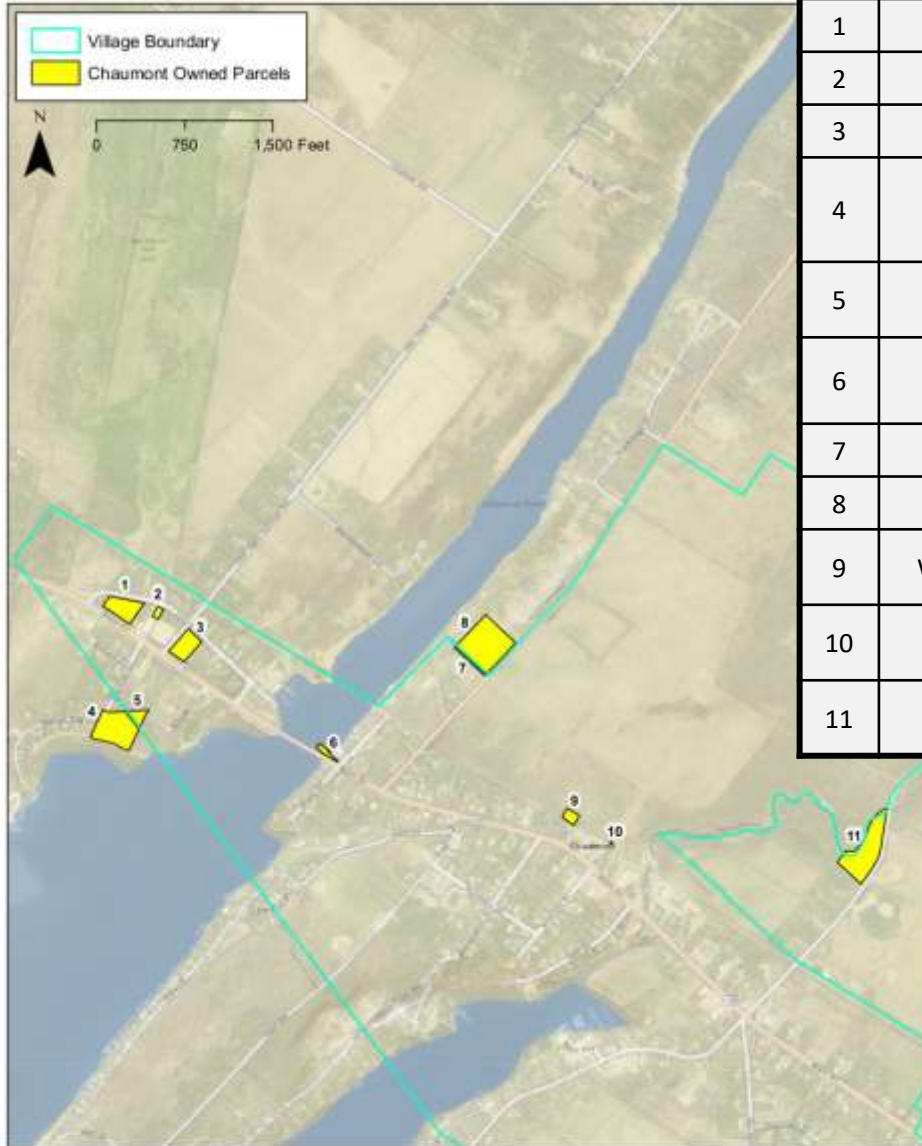
**The Village does not have dedicated reserve funds for DPW large equipment replacement. Insurance is a General Fund expenditure.**

# Village Owned Buildings/Assets Insurance Schedules 2018-2019

Asset	Address	Coverage Amount	
		Building	Personal Property
Storage Building	Circle Dr.	\$55,396	-
Sewage Lift Station	Circle Dr.	\$43,229	-
Water Sphere	Main St.	\$272,740	-
Sewage Lift Station	Main St.	\$43,229	-
Wastewater Treatment Plant	Depauville Rd.	\$934,309	\$3,200
Sewage Lift Station	Wilson St.	\$43,229	-
Sewage Lift Station	Water St.	\$96,063	-
Sewage Lift Station	Mill St.	\$64,042	-
Sewage Lift Station	Washington St.	\$43,229	-
Sewage Lift Station	County Rte 125	\$43,229	-
Village Office	12175 NYS Rte 12E	-	\$22,204

# Village Owned Property: Total Value = \$2,730,700

## Village of Chaumont Owned Parcels



#	Use	Address	Parcel ID	Assessed Value	Acres
1	Vacant	NYS Rte 12E	61.34-1-25.3	\$17,800	1.1
2	Garage	11334 Circle Dr	61.34-1-25.1	\$58,700	<1
3	Recreation	NYS Rte 12E	61.34-1-23.1	\$130,400	<1
4	Beach Park	27870 Bay View Dr	61.11-1-18.1	\$180,700	2.0
5	Beach Park	SW of NYS Rte 12E	61.34-1-23.3	\$22,800	0.4
6	Land under water	W Main & Water St	61.42-2-1	\$17,000	<1
7	WWTP	Co Rte 179	61.42-2-18.3	\$400	<1
8	WWTP	27831 Co Rte 179	61.08-1-9.2	\$2,079,200	2.9
9	Water Tower	N of E Main St	61.43-1-4	\$222,200	<1
10	Vacant	N of NYS Rte 12E	61.43-1-3.2	\$500	<1
11	Vacant	Morris Tract Rd	62.00-2-2	\$1,000	2.5

# Village Water

# Village Water Infrastructure

The original water system was built in 1959 and has been repaired and replaced in sections.

**Water Source:** Development Authority of the North Country Regional Waterline

**Water Treatment:** none, DPW samples water daily

**Water Storage Tank:** 75,000 gallon capacity

**Max capacity of Village water system:** 75,000 GPD (maximum capacity on original water supply permit)

**Average Use:** 45,000 GPD

**Number of Customers:** 277

**EDUs:** 330 (equivalent dwelling units)

**Current Water Rate:** Metered water system; Bills are sent every 2 months (6 bills/year)

<b>Village User (277 Customers)</b>	Flat Rate (includes 3,000 gallons)	\$40.00
	Usage Rate	\$5.00 per 1,000 gallons
	DCC Rate (DANC Charge)	\$25.00 flat charge
	O&M	\$25.00 flat charge
<b>Outside User (18 Customers)</b>	Flat Rate (includes 3,000 gallons)	\$60.00
	Usage Rate	\$6.00 per 1,000 gallons
	DCC Rate	\$30.00
	O&M	\$25.00

**Water Distribution System was mapped with GIS by DANC**

- 6.9 miles of water main



# Village Water Infrastructure

## **The DPW staff also serve as the Water Operators:**

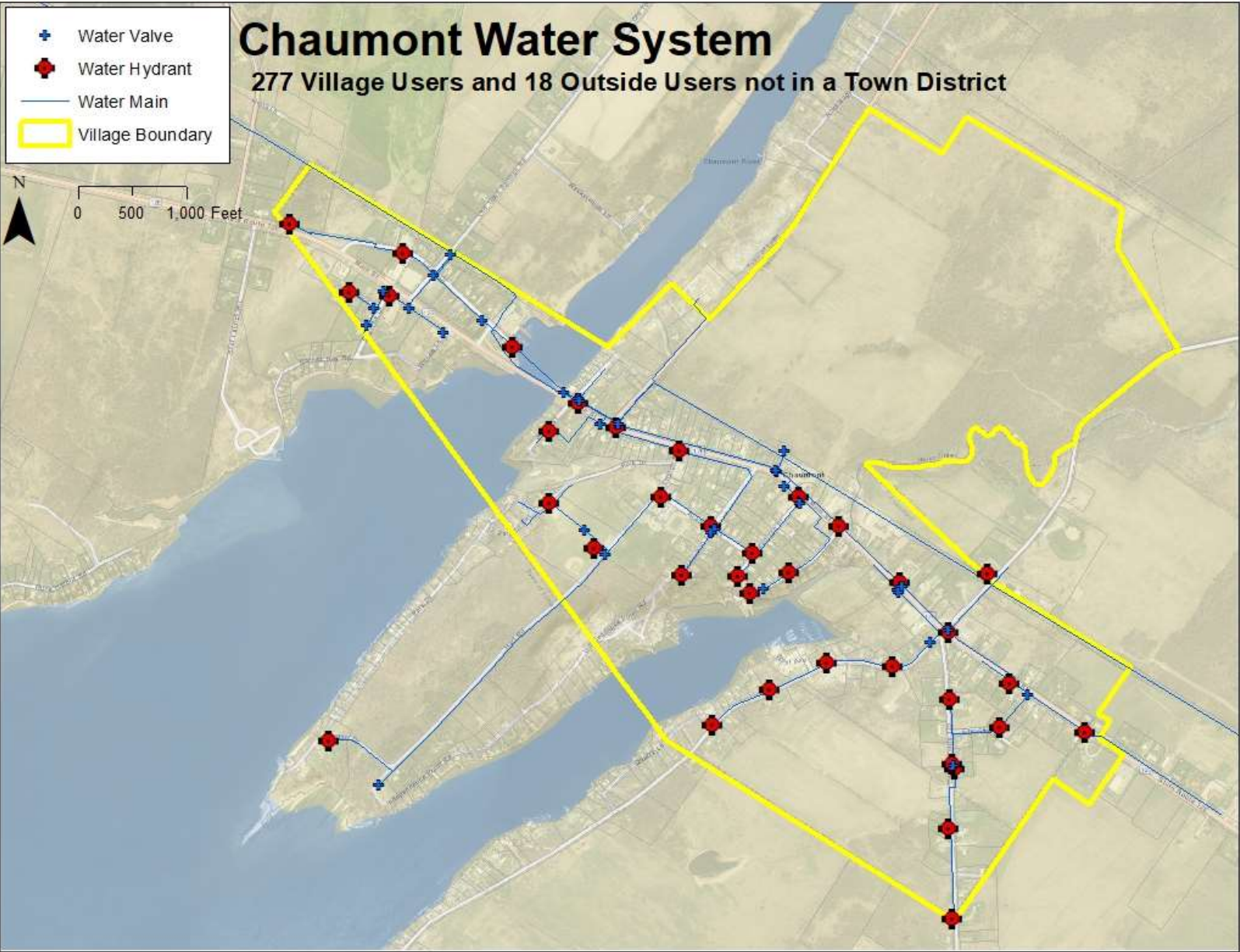
- System requires a Grade D NYSDOH Water Operator license and all 3 DPW staff have the license required to operate the system.

## **Responsibilities:**

- Monitor master meters and storage tank
- Conduct water sampling/testing for chlorine residual
- Water record keeping
- Water meter reading
- Maintain and repair distribution system
- Respond to water emergencies (breaks, frozen pipes, etc.)
- Handle state reporting and regulatory requirements
- These responsibilities are 24 hours a day, 7 days a week

**DPW staff track their time working on the water system on their time sheets.**

# Village Water Distribution Map



# Village Sewer

# Village Sewer Infrastructure

The original sewer system was built in 2002 and is a combination of gravity mains and force mains. The Wastewater Treatment Plant is a Rotating Biological Contactor (RBC) plant.

**SPDES Permit Maximum Discharge:** 100,000 gallons per day monthly average

**Number of Customers:** 275

**EDUs:** 318 (equivalent dwelling units)

**Current Sewer Rate:** Bills are sent every two months (6 bills/year)

<b>Village User (275 Customers)</b>	Debt Service	\$52.67 flat charge
	Usage Fee (based off water usage)	\$5.00 per 1,000 gallons
	O&M	\$20.00 flat charge

**Sewer Collection System was mapped with GIS by DANC**

- 7 miles of sewer main

# Village Sewer Infrastructure

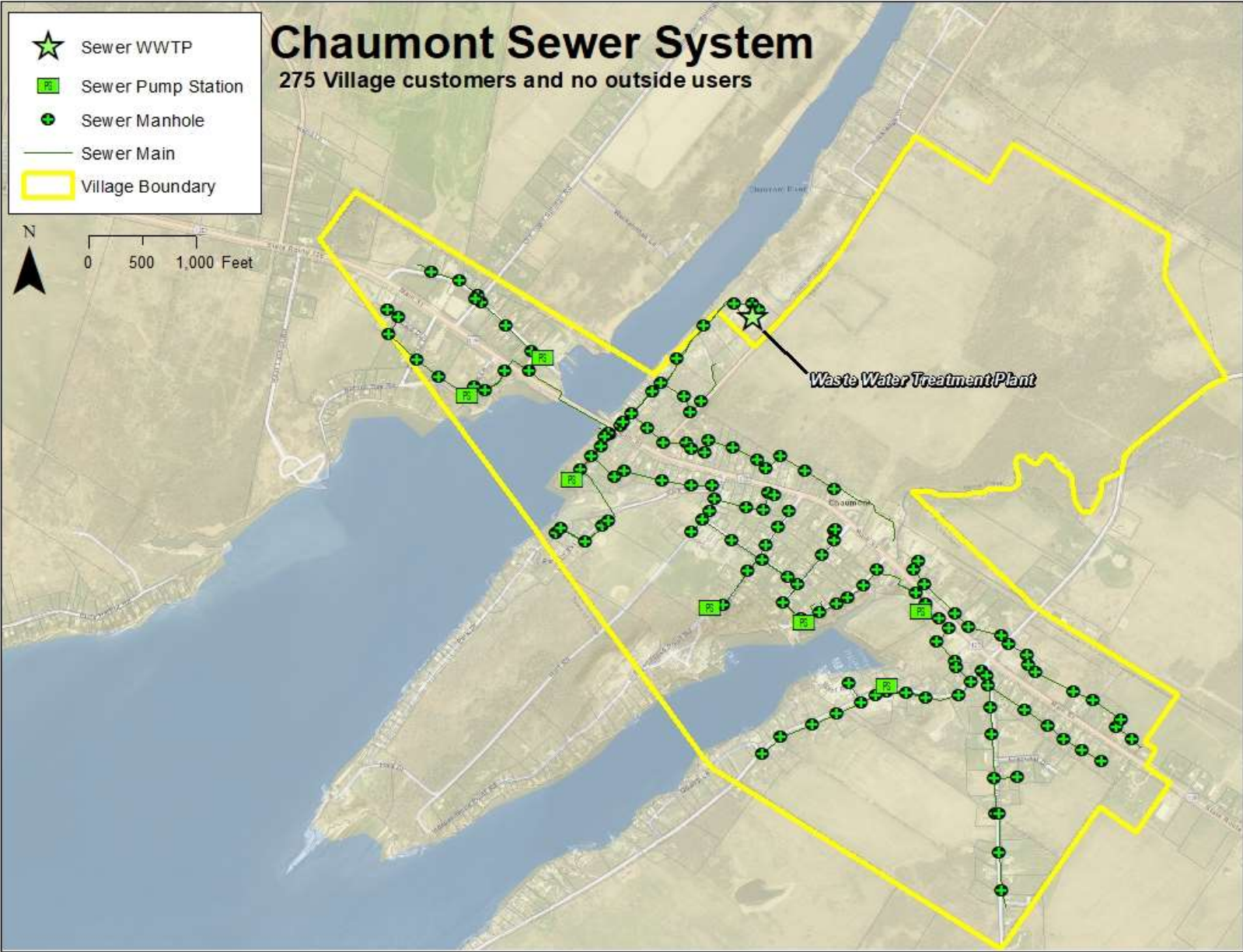
## **The DPW staff also serve as the Sewer staff:**

- Waste Water Treatment Plant requires a Grade 2 license
- Superintendent holds Class 3A sewer license
- 1 DPW Operator holds Class 2A sewer license

## **Responsibilities:**

- Monitor 7 sewer pump stations and wastewater treatment plant
- Maintain and repair system
- Respond to emergencies (breaks, frozen pipes, etc.)
- Handle state reporting and regulatory requirements
- These responsibilities are 24 hours a day, 7 days a week

# Village Sewer Distribution Map



# Village Street Lighting



# Village Street Lighting

Lighting is a Village service that is currently provided through a contract with National Grid for lighting management and maintenance.

Street lighting is relevant to this dissolution study because if the Village were to dissolve, the Study Committee would need to determine whether it recommends forming a lighting district. Some Towns choose to have lighting districts for all areas served and other choose to carry this expense as a Town-wide service in their general fund.

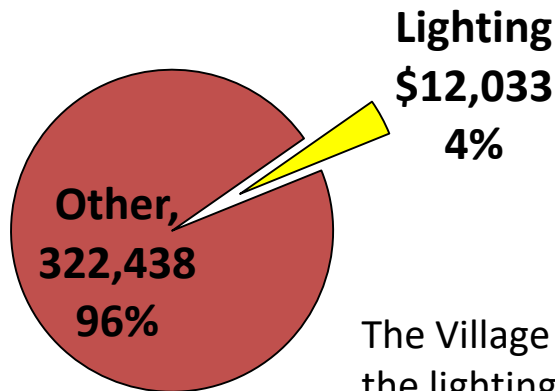
The Village DPW does not manage or maintain the street lights.



# Village Street Lighting

- ❖ All Village taxpayers are taxed for street lighting as part of their Village tax bill
- ❖ The cost for lighting was \$12,033 in the FYE 2018 AUD

## Lighting vs. Overall FYE 2018 General Fund Expenditures



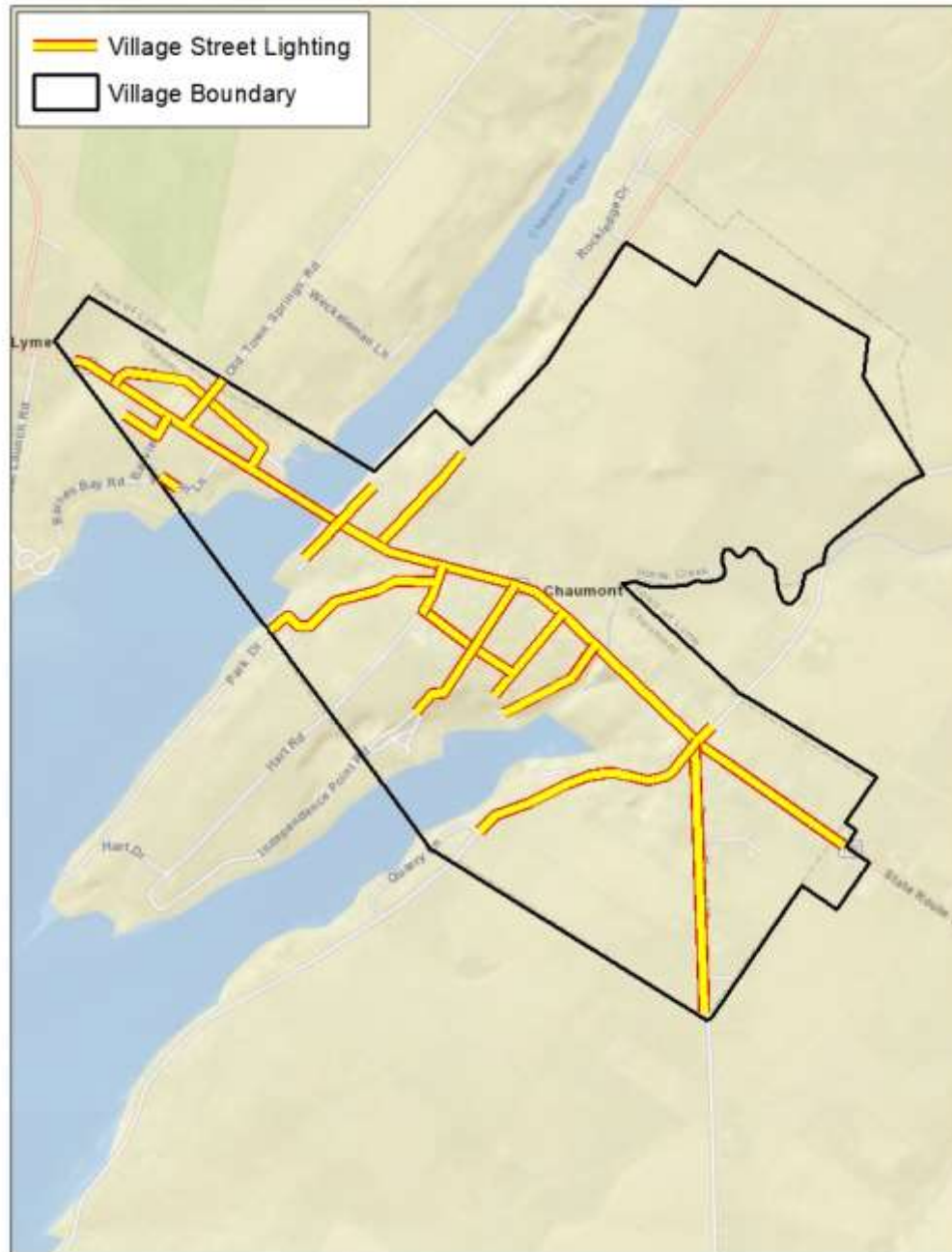
The Village taxpayers pay for lighting as part of their Village tax. If the lighting costs were broken out as a separate tax rate, the rate would be as follows:

Lighting Tax Rate Derived by:

Cost of Lighting / Taxable Assessed Value x 1,000 = Rate

$\$12,033 / \$37,390,739 \times 1,000 = 0.32$  per \$1,000 of assessed value

# Map of Village Street Lighting



# Town Highway

# Town of Lyme Highway Department

The Town and the Village have a shared services agreement in place to help each other when needed with Highway and DPW duties.

The Town of Lyme Highway Department includes the following staff:

- 1 Highway Superintendent (elected)
- 6 Full-time MEOs (Motor Equipment Operators)
- 2 Seasonal winter MEOs

## Snow removal

Town Highway plows all the roads in the Town, including the County and State roads.

❖ Town: 46.06 centerline miles; 92.12 lane miles	} <b>Total = 85.72 centerline miles 171.44 lane miles</b>
❖ County: 29.76 centerline miles; 59.52 lane miles	
❖ State: 9.9 centerline miles; 19.8 lane miles	

## Mowing and Trimming

Town Highway mows 43.18 miles of Town roadsides and 34 miles of County roadsides

- ❖ Town is paid by the County for mowing services

# Town of Lyme Highway Department

## Maintenance of Streets

- ❖ Patching
- ❖ Shoulder repair
- ❖ Culvert maintenance
- ❖ Sign maintenance
- ❖ Shoreline erosion control – especially with recent high water events

## Paving

Town Highway hauls blacktop with its trucks but contracts out for paving services

## Water Districts

One of the Town MEOs is also the Water Operator. He tracks his time to the water districts separately from his MEO duties. Other highway staff may work on the water distribution system as needed.

## Cemeteries

The Town is responsible for 7 abandoned cemeteries and provides grave digging services to the 1 active cemetery (Three Mile Bay)

- ❖ Town contracts out for mowing of the abandoned cemeteries, but Highway staff will trim or remove trees when needed

# Town Major Assets

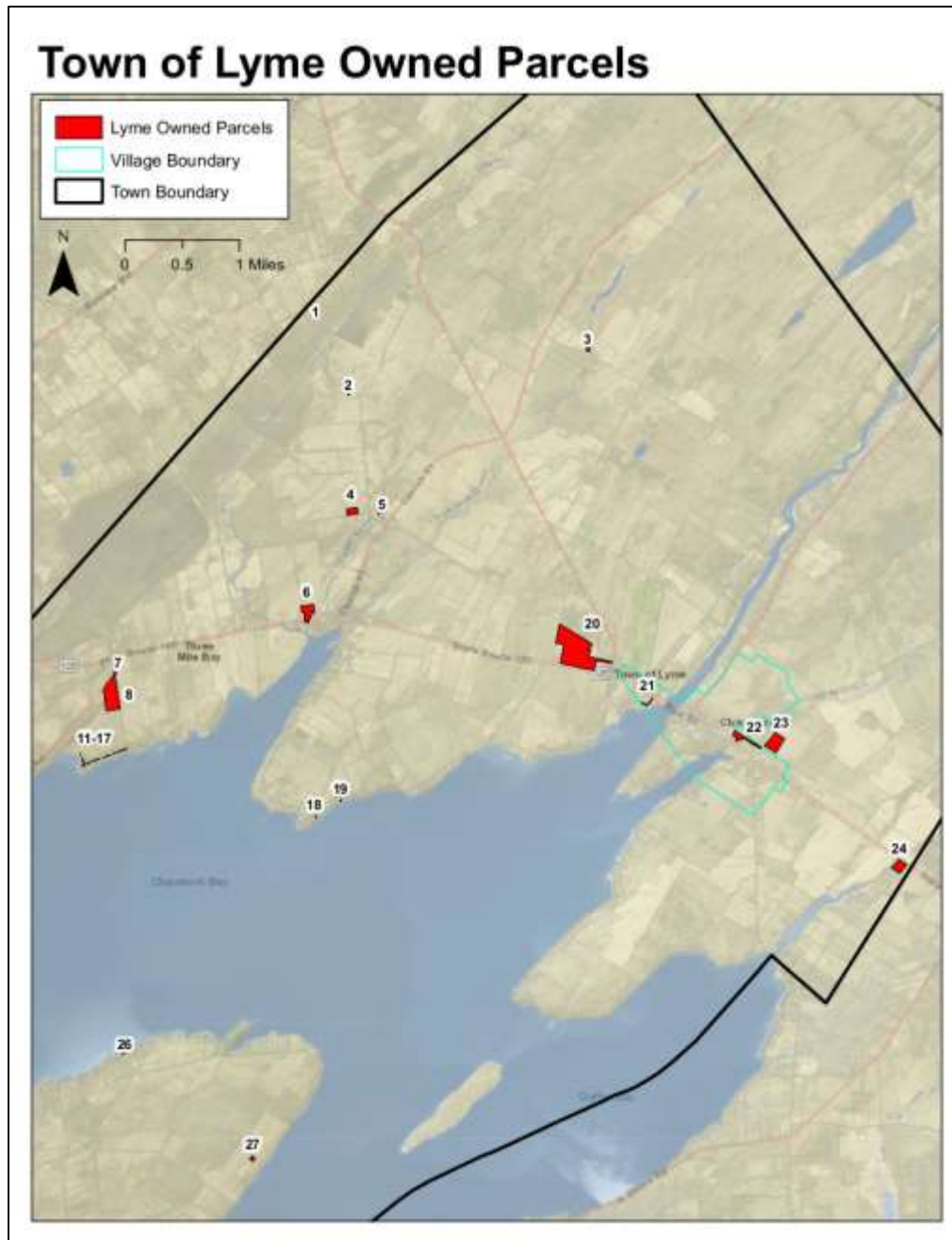
The Town insures the following large vehicles in addition to 78 other pieces of equipment and assets. Please see the Town insurance schedule for those items.

Asset	Model Year	Insurance Coverage Amount
Eager Beaver Trailer	1991	\$21,000
FMC Street Sweeper	1973	\$4,900
Borco Trailer	1990	\$0
Galbreath Trailer	2002	\$38,000
Mack Dump Truck	2008	\$148,000
Chevrolet Dump Body Pick-up	2008	\$44,451
Chevrolet P30 Van	1997	\$4,000
Mack GU713 Henderson w/ plow	2012	\$199,594
Ford 250 Pick-up	2011	\$30,000
International 7600 Dump Truck	2015	\$195,795
Mack GU713 w/ Viking Equipment	2016	\$190,862
Mack Tractor	2013	\$60,000
Ford Pick-up	2018	\$43,000

# Town Owned Buildings/Assets Insurance Schedules 2019

Asset	Address	Coverage Amount	
		Building	Personal Property
10745 NYS Route 12E			
Recycling Center Building	27990 County Rte 57	\$91,851	\$4,503
Water Building	Circle Dr.	\$9,004	-
Ball Field	Morris Tract Rd.	\$100,835	-
Storage Building at Three Mile Bay Cemetery	NYS Rte 12E	\$7,401	-
Mausoleum at Three Mile Bay Cemetery	NYS Rte 12E	\$14,802	-
Town Garage	12175 NYS Rte 12E	\$519,225	\$108,059
Town Hall	12175 NYS Rte 12E	\$1,422,145	\$163,196
Salt Shed	12175 NYS Rte 12E	\$48,030	-
Storage Building	12175 NYS Rte 12E	\$3,336	-
Water Tower	Ashland Rd.	\$630,327	-
Storage Building	NYS Route 12E Ball Field	\$3,245	-
Bleachers and Soccer Goals Frame	NYS Route 12E Ball Field	\$8,653	-
Sand and Salt Barn	10745 NYS Rte 12E	\$360,000	-

# Town Owned Property: Total Value = \$1,127,300





# Town Owned Property

#	Use	Address	Parcel ID	Total Assessed Value	Acres
1	Rural Vacant Lots of 10 Acres or Less	NE of Swamp Rd	50.00-2-18	\$200	0.3
2	Cemeteries	N of Ashland Rd	51.00-1-3	\$1,900	<1
3	Cemeteries	Robinson Rd	51.00-1-13.22	\$1,400	<1
4	Water Supply	29565 Ashland Rd	50.00-2-23.3	\$399,700	3.0
5	Cemeteries	E of Ashland Rd	51.00-1-40	\$2,200	<1
6	Cemeteries	NYS Rte 12E	60.08-1-11	\$83,500	7.3
7	Cemeteries	Co Rte 57	50.00-2-37.3	\$3,500	<1
8	Transfer Site	27990 Co Rte 57	60.11-1-1	\$178,000	19.1
9	Other Rural Vacant Lands	S of Co Rte 57	60.11-1-66.1	\$300	<1
10	Other Rural Vacant Lands	S of Co Rte 57	60.11-1-66.2	\$300	<1
11	Other Rural Vacant Lands	S of Co Rte 57	60.11-1-67.1	\$300	<1
12	Other Rural Vacant Lands	S of Co Rte 57	60.11-1-67.2	\$300	<1
13	Other Rural Vacant Lands	S of Co Rte 57	60.11-1-68	\$300	<1
14	Residential Vacant Land	S of Co Rte 57	60.11-1-69	\$300	<1
15	Other Rural Vacant Lands	S of Co Rte 57	60.11-1-70	\$300	<1
16	Residential Vacant Land	S of Co Rte 57	60.11-1-71	\$300	<1

# Town Owned Property

#	Use	Address	Parcel ID	Total Assessed Value	Acres
17	Other Rural Vacant Lands	S of Co Rte 57	60.11-1-72	\$300	<1
18	Residential Vacant Land	Three Mile Pt Rd	61.13-1-29	\$400	<1
19	Residential Vacant Land	Three Mile Pt Rd	61.13-1-9	\$4,300	<1
20	Park	10745 NYS Rte 12E	61.07-1-4.31	\$50,200	55.3
21	Residential Vacant Land	Wilson Ln	61.34-1-21	\$1,200	0.4
22	Highway Garage	12171/175 NYS Rte 12E	61.51-1-30	\$294,300	4.0
23	Athletic Fields	12508 Morris Tract Rd	62.00-2-15.2	\$43,000	10.0
24	Landfill or Dump	NYS Rte 12E	62.00-2-26	\$28,600	4.7
25	Other Rural Vacant Lands	Failing Shores Ln	70.11-3-69	\$2,100	<1
26	Other Rural Vacant Lands	Failing Shores Ln	70.11-3-70	\$2,100	<1
27	Cemeteries	NW of State Park Rd	70.16-1-2	\$28,000	<1

# Town Water

# Town Water

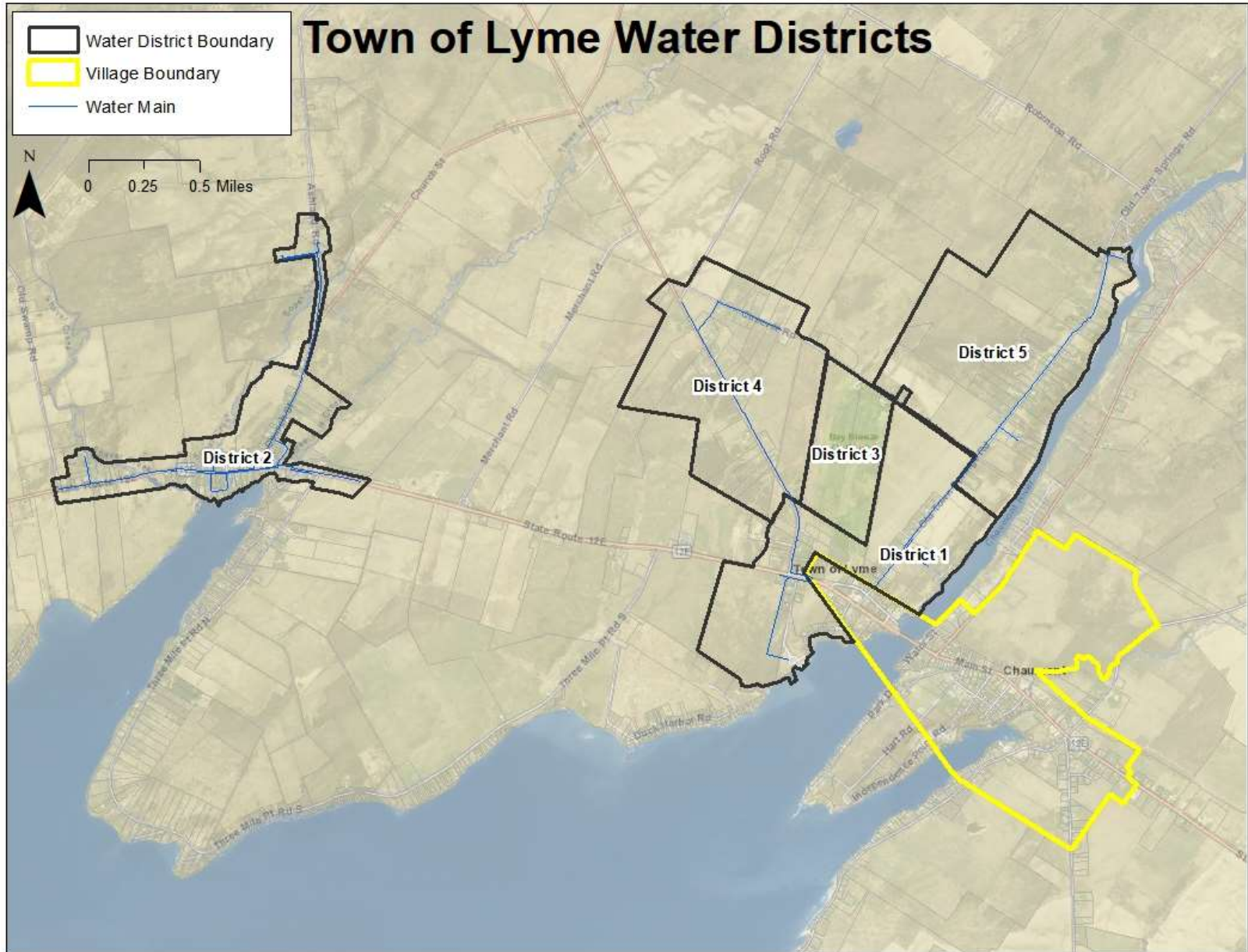
The Town has 5 water districts and sources its water from the Development Authority of the North Country Regional Water Line. Water bills are sent out every 2 months (6 bills/year).

## Rate Table:

	<b>WD1</b>	<b>WD2</b>	<b>WD3</b>	<b>WD4</b>	<b>WD5</b>
<b>Customers</b>	48	159	1	39	55
<b>EDUs</b>	37	142	1	33.5	48
<b>Usage Fee per 1,000 g</b>	\$2.55	\$2.55	\$2.55	\$2.55	\$2.55
<b>Debt</b>	\$15.00	\$38.00	None	\$27.00	\$59.00
<b>DCC</b>	\$38.25	\$38.25	\$38.25	\$38.25	\$38.25
<b>O&amp;M</b>	\$24.00	\$33.00	\$15.00	\$24.00	\$20.00
<b>Capital Reserve</b>	\$3.00	\$3.00	\$3.00	\$3.00	\$3.00
<b>O&amp;M Reserve</b>	\$9.00	\$9.00	\$9.00	\$9.00	\$9.00

The Town Highway Superintendent, Highway Deputy, and the MEO/Water Operator have their Class D water licenses. The MEO/Water Operator operates the water system in the 5 Town districts.

# Town Water Districts Map



# Village Shared Services to Town

The Village keeps track of staff hours and costs it provides to the Town as shared services. See table below. Note: the Town no longer tracks its hours or costs for services to the Village.

Village Fiscal Year	Dates	Building/ Grounds (hours)	Parks/ Recreation (hours)	Snow/Ice (hours)	Office (hours)	Other (hours)	Waterline (hours)	Equipment (hours)	Cost	Total
2014	6/14 - 12/14	45	16		85		10		\$2,302.65	\$4,659.90
	1/15 – 6/15	17	21		164				\$2,357.25	
2015	6/15 - 12/15	43	4		219.75				\$3,190.60	\$6,237.02
	1/16 – 6/16	22	4	6	164		43	12	\$3,046.42	
2016	6/16 - 12/16	29	2		230.25	24	2	6	\$3,560.02	\$6,620.49
	1/17 – 6/17	23		62.50	135.75				\$3,060.46	
2017	6/17 - 12/17	32			229.25	15	10		\$3,456.53	\$5,413.53
	1/18 – 6/18	22			155.75				\$1,957.00	
2018	6/18 - 12/18	34			220.75	16	18		\$3,661.63	\$6,287.90
	1/19 – 6/19	22			145.50				\$2,626.27	
<b>Total</b>		<b>289</b>	<b>47</b>	<b>68.50</b>	<b>1,750</b>	<b>55</b>	<b>83</b>	<b>18</b>		<b>\$29,218.83</b>

# Questions or Comments?



Carrie Tuttle, Director of Engineering

315-661-3259

[ctuttle@danc.org](mailto:ctuttle@danc.org)

Star Carter, GIS Supervisor

315-661-3261

[scarter@danc.org](mailto:scarter@danc.org)